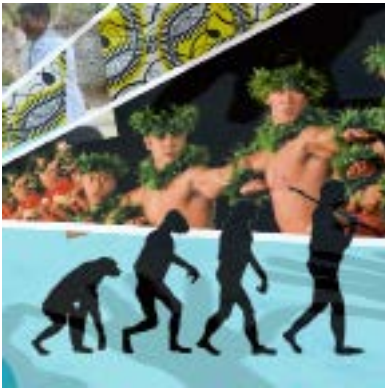


# Students Without Borders

fyp.uoregon.edu

FALL 2020



## COURSES

### College Connections

PSY 199

1 credit

### Mind and Society

PSY 202 - WEB Course

Core Education Social Science (>2)

4 credits

### Third Course

This FIG gives you the opportunity to choose a third course from a group of possible classes. See the options at the right.

## CALENDAR

### First FIG Meeting

You will get to meet your FIG classmates, FIG Assistant (FA), and Faculty before classes start!

Check your FIG page in September to find out more details.

## ACADEMIC TEAM

### College Connections Professor

Jeff Measelle

Professor of Psychology

measelle@uoregon.edu

### FIG Assistant

Zoey Johnson

zoeyj@uoregon.edu

## ABOUT THIS FIG

### College Connections

Students without Borders provides students with the chance to consider actions they can take to improve their communities, both locally and globally, by utilizing theories and evidence of human wellbeing. We ask: "How can I help to make the world a better place?"

### Mind and Society

This course is an introduction to psychological research methods, child and adult development, personality structure and functioning, social processes in everyday life, cultural and cross-cultural models of human adaptation, and abnormal clinical psychology. This course is part of a two-term sequence in introductory psychology. The other course in this sequence (PSY 201) emphasizes learning, perception, memory, and the role of neural structures in psychological processes. PSY 201 and 202 are not prerequisites for each other.

### Third Course Options

GEOG 341: Population and Environment

BI 121: Introduction to Human Physiology

PS 205: Introduction to International Relations

GEOG 142: Human Geography

WGS 221: Bodies and Power

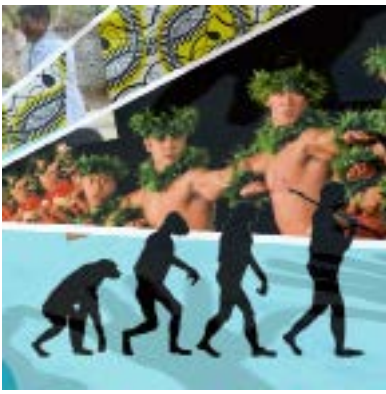
## NEXT STEPS

After you're registered for your FIG, you will want to check out the Meet Your FIG page (<https://fyp.uoregon.edu/fall-2020-figs>). This page will have everything you need to know before the beginning of fall term, including how to email your FIG Assistant, if you have a summer assignment, and when you will be meeting your FIG for the first time in September. In order to prepare for your coursework and be notified about important academic deadlines you will want to download the "Canvas" and "Navigate" apps to your phone or any device you will be using. If you have questions about anything, make sure you email your FIG Assistant – they are here to help!



Division of  
Undergraduate Education and  
Student Success

# Students Without Borders



fyp.uoregon.edu

FALL 2020

Students Without Borders					
	Monday	Tuesday	Wednesday	Thursday	Friday
12PM					
1PM					
2PM		<b>PSY 199</b> <b>15732</b> <b>LIL 262</b> <b>2:15pm-3:45pm</b>			<b>PSY 202</b> <b>15739</b> <b>REMOTE 00</b> <b>2:00pm-3:00pm</b>
3PM					
<b>KEY</b>	Your FIG College Connections Class. Meet once a week with 20 peers, Faculty, and FIG Assistant (FA).		The lecture courses associated with your FIG.		Your discussion or lab section for lecture courses.

This FIG has an asynchronous remote class (which appears on the UO class schedule as “WEB”) that does not appear on this schedule. You are enrolled in all of the FIG classes, and can see them when you log on to Duckweb.

## ENROLLED IN A FIG AND CHANGE YOUR MIND?

Visit this link to find out the best way to make FIG changes for you: <https://fyp.uoregon.edu/register>