

FIG Guide

Get the most out of your time at the university by joining a First-Year Interest Group (FIG) during fall term. FIGs bring groups of 20 freshmen together for a unique academic experience. FIG students take three courses together during fall term: two lecture courses and a 1-credit College Connections course.

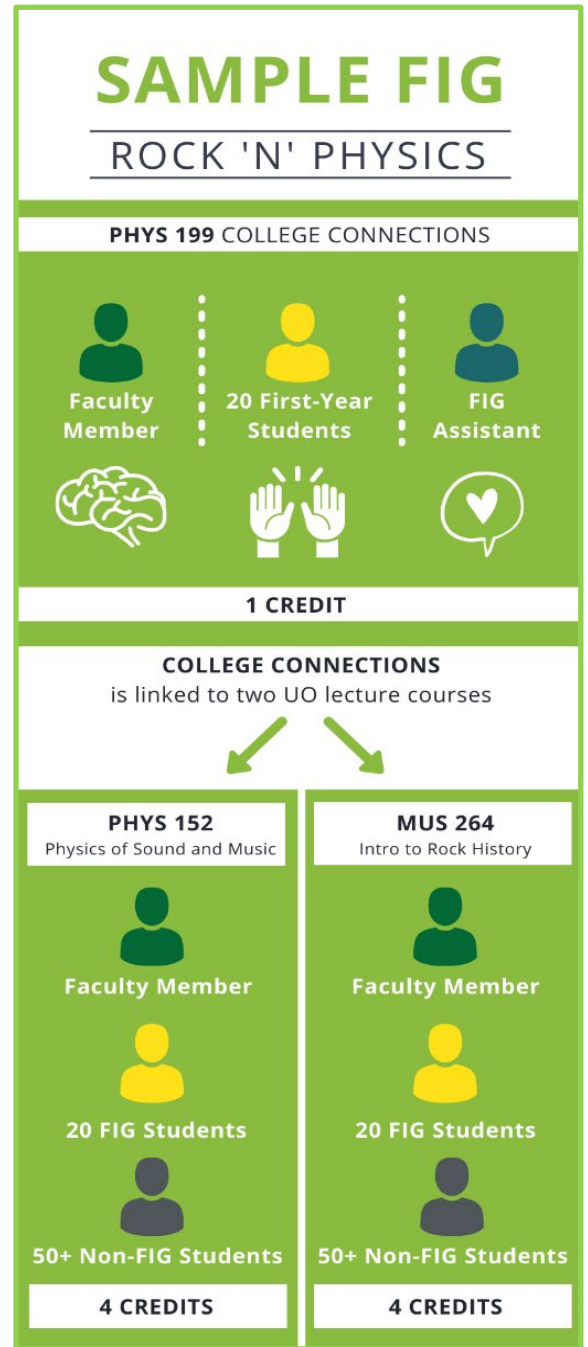
FIGs are all about making connections! In a FIG, freshmen:

- Connect with faculty
- Connect with an undergraduate mentor
- Connect academic courses from different disciplines
- Connect with an academic theme
- Connect with peers
- Connect with campus and the Eugene community

The FIG Guide will help you explore your FIG options. For fall 2020 we have over 50 FIGs – something for everyone!

Table of Contents

FIG Theme Categories	2-4
ConFIGurations	4-10
Chemistry FIGs Enrollment, Prerequisites & Corequisites.....	11
DEEP-DIVE FIGs	11
Cluster FIGs	12
Reacting to the Past FIGs	12
FIG Runways	12
Carnegie Global Oregon FIG	13
Clark Honors College Students	13



Students in the Speak Your Mind FIG spend time in the UO Brain Development lab with Professor Charlotte Vaughn.



Students in the Edible Activism FIG volunteer at the Huerto de la Familia community garden in Eugene.



Students in the Human Hierarchies FIG display their final project at the FIGposium.

Theme Categories - Description - FIG List

While each FIG is distinct (with different course pairings and academic topics), FIGs are grouped together by overarching themes into 7 categories. Find themes below that interest you, and start exploring your options!

Art of Storytelling

Make sense of the world around us through stories and art

From War to Peace

In Search of Belonging: Storytelling and Community

My Visual Story

Pass the MIC

Remixing Media, Critiquing Culture (DEEP-DIVE)

Speak for Yourself!

Stories We Tell

Visual Narrative: Manga to American Comics

Becoming Human

Discover our humanity through science

Animal Behavior (DEEP-DIVE)

Game of Evolution

Human Genome (DEEP-DIVE)

Oregon Outside

Paging Dr. Darwin (CLUSTER)

Speak Your Mind

The Human Animal

What Makes for a Healthy Start? (FIG RUNWAY)

Breaking Barriers

Investigate how different perspectives shape communities

Beyond the Bars (DEEP-DIVE)

Breaking the Wall

Brilliant Imperfections (DEEP-DIVE)

Face to Face

Human Hierarchies

Media Mirror

Radicals and Reformers

Students without Borders (CLUSTER)

This is Me

Tomato, Tomäto

Your Vote: What Matters?

Culture in Review

Examine cultures and subcultures through a discerning lens

Edible Activism (DEEP-DIVE)
Enduring Tensions
Hidden History
Hip Hop & Politics of Race (DEEP-DIVE)
Just Futures
Justice Matters (DEEP-DIVE)
Social Progress, Social Change
Who's Allowed In?

Going Green

Delve in to how we affect the environment and how it affects us

Analyzing Our Environment
Edible History (DEEP-DIVE)
Environmental Design (DEEP-DIVE)
Food and the Garden (DEEP-DIVE)
Food Matters (DEEP-DIVE)
Human Fragility
Inside Architecture (DEEP-DIVE)
Planning for the Planet

Path to Global Citizenship

Explore world cultures and expand your boundaries

Aquí se Habla Spanglish
Bella Italia!
Carnegie Global Oregon (FIG RUNWAY, DEEP-DIVE)
Development Safari
Gurus and Governors
Speak to the World (CLUSTER)
The Asian Lens

Science and Society

Solve problems and make an impact on the world through science

A Trip Down Memory Lane (DEEP-DIVE)
Coffee: Chemistry and Culture
Science in the News
Startups from the Ground Up
The Problem with Problems
The Secrets to Success in STEM

FIG ConFIGurations

(alphabetical order)

In the ConFIGurations section, the FIGs are listed alphabetically and show all of the courses that make up the FIG.

DEEP-DIVE

A Trip Down Memory Lane

ERTH 306 Volcanoes & Earthquake

ANTH 163 Origins of Storytelling

ERTH 199 College Connections

Analyzing Our Environment

CIS 122 Introduction to Programming and Problem Solving

ENVS 202 Introduction to Environmental Science: Natural Science

CIS 199 College Connections

DEEP-DIVE

Animal Behavior

ANTH 171 Introduction to Monkeys and Apes

BI 132 Introduction to Animal Behavior

ANTH 199 College Connections

Aquí se Habla Spanglish

SPAN 101 First Year Spanish

SPAN 199 College Connections

Bella Italia!

ITAL 101 First Year Italian

ITAL 150 Cultural Legacies of Italy

ITAL 199 College Connections

DEEP-DIVE

Beyond the Bars

SOC 207 Social Inequality

PS 106 Power, Politics, and Inequality

SOC 199 College Connections

Breaking the Wall

GER 221 Postwar Germany: Nation Divided

SOC 204 Introduction to Sociology

GER 199 College Connections

DEEP-DIVE

Brilliant Imperfection

PHIL 335 Medical Ethics
WGS 221 Bodies and Power
PHIL 199 College Connections

(FIG Runway) DEEP-DIVE

Carnegie Global Oregon

(Read about this unique FIG at the end of the FIG Guide.)

GEOG 341 Population and Environment
GEOG 199 College Connections

Coffee: Chemistry and Culture*

CH 221 General Chemistry
CH 227 General Chemistry Lab
CH 199 College Connections

* check pre- or corequisites below, registration at IntroDUCKtion

Development Safari

SWAH 101 First Year Swahili
FLR 225 Voices of Africa
SWAH 199 College Connections

DEEP-DIVE

Edible Activism

ANTH 329 Immigration and Farmworkers
ENVS 225 Introduction to Food Studies
ANTH 199 College Connections

DEEP-DIVE

Edible History

ENVS 225 Introduction to Food Studies
HIST 215 Food in World History
ENVS 199 College Connections

Enduring Tensions

HIST 211 Reacting to the Past
TA 250 Acting I
HIST 199 College Connections

DEEP-DIVE

Environmental Design

LA 260 Understanding Landscapes
LA 337 Design for a Sustainable World
LA 199 College Connections

Face to Face

SOC 204 Introduction to Sociology
J 201 Media and Society
J 199 College Connections

DEEP-DIVE

Food & the Garden

LA 260 Understanding Landscapes
ENVS 225 Introduction to Food Studies
LA 199 College Connections

DEEP-DIVE

Food Matters

ENVS 225 Introduction to Food Studies
HIST 215 Food in World History
ENVS 199 College Connections

From War to Peace

RUSS 204 Introduction to Russian Literature
HIST 241 War in the Modern World II
RUSS 199 College Connections

Game of Evolution

ANTH 274 Animals and People
ENVS 203 Intro to Environmental Studies: Humanities
ANTH 199 College Connections

Gurus and Governors

REL 101 World Religions: Asian Traditions
HIST 211 Reacting to the Past
REL 199 College Connections

Hidden History

HIST 211 Reacting to the Past
ENG 244 Introduction to Native American Literature
HIST 199 College Connections

DEEP-DIVE

Hip Hop & Politics of Race

MUS 360 Hip-Hop: History, Culture, Aesthetics
ES 101 Introduction to Ethnic Studies
CINE 199 College Connections

Human Fragility

PHIL 101 Philosophical Problems
ENVS 202 Introduction to Environmental Studies: Natural Science
PHIL 199 College Connections

DEEP-DIVE

Human Genome*

- CH 221 General Chemistry
- CH 227 General Chemistry Laboratory
- CH 199 College Connections

* check pre- or corequisites below, registration at IntroDUCktion

Human Hierarchies

- GLBL 101 Introduction to International Issues
- SOC 207 Social Inequality
- GLBL 199 College Connections

In Search of Belonging: Storytelling and Community

- COLT 231 Literature and Society
- ANTH 163 Origins of Storytelling
- COLT 199 College Connections

DEEP-DIVE

Inside Architecture

- ARCH 201 Introduction to Architecture
- ARH 313 History of World Architecture II
- ARCH 199 College Connections

Just Futures

- ENVS 203 Introduction to Environmental Studies: Humanities
- SOC 207 Social Inequality
- ENVS 199 College Connections

DEEP-DIVE

Justice Matters

- PHIL 307 Social and Political Philosophy
- PS 106 Power, Politics and Inequality
- PHIL 199 College Connections

Media Mirror

- PSY 202 Mind and Society
- J 201 Media and Society
- J 199 College Connections

My Visual Story

- ENG 280 Introduction to Comic Studies
- ART 101 Understanding Contemporary Art
- UGST 199 College Connections

Oregon Outside

- ERTH 203 History of Life
- ANTH 171 Introduction to Monkeys and Apes
- ERTH 199 College Connections

Paging Dr. Darwin ±

ANTH 175 Evolutionary Medicine

ANTH 199 College Connections

±cluster FIG, see below for third course options

Pass the MIC

MUS 151 Popular Songwriting

CINE 230 Remix Cultures

MUS 199 College Connections

Planning for the Planet

PPPM 205 Introduction to City Planning

ENVS 203 Introduction to Environmental Studies: Humanities

PPPM 199 College Connections

Radicals and Reformers

HIST 211 Reacting to the Past

GER 251 Sexuality (German Culture and Thought)

GER 199 College Connections

DEEP-DIVE

Remixing Media, Critiquing Culture

CINE 230 Remix Cultures

ARTD 250 Print Media Digital Arts

CINE 199 College Connections

Science in the News*

CH 221 General Chemistry

CH 227 General Chemistry Laboratory

CH 199 College Connections

* check pre- or corequisites below, registration at IntroDUCKtion

Social Progress, Social Change

WGS 101 Introduction to Women's and Gender Studies

ES 101 Introduction to Ethnic Studies

WGS 199 College Connections

Speak for Yourself!

TA 271 Introduction to Theatre Arts

COLT 101 Introduction to Comparative Literature

TA 199 College Connections

Speak to the World ±

LING 199 How to Learn Language

ITAL 199 College Connections

±cluster FIG, see below for third course options

Speak Your Mind

LING 101 Introduction to Language
PSY 201 Mind and Brain
LING 199 College Connections

Startups from the Ground Up

CIS 110 Fluency with Information Technology
BA 101 Introduction to Business
CIS 199 College Connections

Stories We Tell

SCAN 251 Text and Interpretation
PHIL 101 Philosophical Problems
SCAN 199 College Connections

Students without Borders ±

PSY 202 Mind and Society
PSY 199 College Connections
±cluster FIG, see below for third course options

The Asian Lens

GLBL 101 Introduction to International Issues
ASIA 111 Great Books of Asia
GLBL 199 College Connections

The Human Animal

ANTH 163 Origins of Storytelling
BI 132 Introduction to Animal Behavior
ANTH 199 College Connections

The Problem with Problems*

CH 111 Introduction to Chemical Principles
MATH 111 College Algebra
CH 199 College Connections

* check pre- or corequisites below, registration at IntroDUCKtion

The Secrets to Success in STEM*

CH 221 General Chemistry
MATH 112 Elementary Functions
CH 199 College Connections

* check pre- or corequisites below, registration at IntroDUCKtion

This is Me

J 201 Media and Society
PSY 202 Mind and Society
J 199 College Connections

Tomato, Tomäto

LING 201 Language and Power
SOC 204 Introduction to Sociology
LING 199 College Connections

Visual Narratives: Manga to American Comics

ENG 280 Introduction to Comic Studies
JPN 250 Manga Millennium
ENG 199 College Connections

(FIG Runway)

What Makes for a Healthy Start?*

CH 111 Introduction to Chemical Principles
PSY 201 Mind and Brain
UGST 113 Runway Seminar

* check pre- or corequisites below, registration at IntroDUCKtion

Who's Allowed In?

EDST 111 Education and Social Change
ES 101 Introduction to Ethnic Studies
EDST 199 College Connections

Your Vote: What Matters?

HIST 203 American Century
PS 106 Power, Politics, and Inequality
HIST 199 College Connections

***Chemistry FIGs Registration information, course prerequisites and corequisites**

For CH 221 General Chemistry: Prerequisite: high school chemistry; prerequisite or corequisite: C- or better in MATH 111, MATH 112. Concurrent CH 227 or 237 is recommended. For CH 111 Introduction to Chemical Principles: prerequisite or corequisite: MATH 111.

Chemistry FIG enrollment will not take place online through Duckweb. Instead, you can join a chemistry FIG at IntroDUCKtion, after you have met with an advisor. **Remember to take your math placement test before coming to IntroDUCKtion. Your advisor will use the test score to help you select the right chemistry track.**

Chemistry FIGs - LIST

Coffee: Chemistry and Culture
Human Genome (DEEP-DIVE)
The Problem with Problems
Science in the News
The Secrets to Success in STEM
What Makes for a Healthy Start? (FIG RUNWAY)

DEEP-DIVE FIGs

DEEP-DIVE FIGs give students a distinct academic experience because they create an immersive learning environment. Some of the DEEP-DIVE FIGs have an intermediate course (which may include 300 level), which are smaller than the courses in many of the other FIGs, and are intended to encourage students to explore subjects in depth. Other DEEP-DIVE FIGs have projects, student groups, performances and more that allow students to really dive deep into subject matter.

DEEP DIVE FIGs - LIST

A Trip Down Memory Lane (DEEP-DIVE)

Animal Behavior (DEEP-DIVE)

Beyond the Bars (DEEP-DIVE)

Brilliant Imperfection (DEEP-DIVE)

Carnegie Global Oregon (FIG RUNWAY, DEEP-DIVE)

Edible Activism (DEEP-DIVE)

Edible History (DEEP-DIVE)

Environmental Design (DEEP-DIVE)

Food & the Garden (DEEP-DIVE)

Food Matters (DEEP-DIVE)

Hip Hop & Politics of Race (DEEP-DIVE)

Human Genome (DEEP-DIVE)

Inside Architecture (DEEP-DIVE)

Justice Matters (DEEP-DIVE)

Remixing Media, Critiquing Culture (DEEP-DIVE)

Cluster FIGs

Cluster FIGs consist of only one co-enrolled general education course. A secondary 4-5 credit course is required, but students will choose one from a list of options. (Students are responsible for enrolling themselves in the course they select through Duckweb.)

Cluster FIGs - LIST

Paging Dr. Darwin

Course options - **BI 121** Intro to Human Physiology, **PS 205** Introduction to International Relations, **GEOG 142** Human Geography, **WGS 221** Bodies and Power

Students Without Borders

Course options – **BI 121** Intro to Human Physiology, **PS 205** Introduction to International Relations, **GEOG 142** Human Geography, **GEOG 341** Population and Environment, **WGS 221** Bodies and Power

Speak to the World

Course options – Any first-year language course

Reacting to the Past FIGs

Reacting to the Past courses consist of elaborate role-playing games, set in specific historical time periods. The course instructor will act as the gamemaster, determining student roles, preparing students to play, and occasionally guiding the games as they develop. Students learn to construct arguments from historical texts and then support positions through writing and speeches. Small class size. Credits count toward the general education social science group requirement.

Reacting to the Past FIGs - LIST

Enduring Tensions
Gurus and Governors

Hidden History
Radicals and Reformers

FIG Runways

FIG Runways will begin as a FIG in the fall and continue in winter and spring terms. Each FIG Runway will include a faculty member and a mentor called the FIG Assistant (FA).

FIG Runways – LIST

What Makes for a Healthy Start? (FIG RUNWAY)
Carnegie Global Oregon (FIG RUNWAY, DEEP-DIVE)

What is unique about Carnegie Global Oregon?

Carnegie Global Oregon is a FIG Runway, in which you take a year-long seminar with the same professor and peers. After the fall FIG courses, students enroll in 1-credit seminars in winter and spring to continue exploring the CGO theme. The majority of CGO students remain active in this vibrant learning community throughout their years at the university. This provides a supportive mix for sophomores, juniors, and seniors who meet weekly for class and a meal to explore areas of ethical concern. For more information, visit carnegieglobal.uoregon.edu

Clark Honors College Students

CHC students may consider enrolling in the following list of recommended FIGs to help build community in your field of interest, work toward major requirements, and in some cases, work toward CHC curricular requirements. To avoid the potential for duplicating course work if you are coming in with transfer, AP, or IB credit, or if you wish to take a FIG not listed here, you should first speak with CHC's First-Year Academic Advisor, Dr. Angela Rovak (arovak@uoregon.edu), before enrolling in a FIG.

FIG Options

Bella Italia!
Brilliant Imperfection (DEEP-DIVE)
Carnegie Global Oregon (FIG RUNWAY, DEEP-DIVE)
Enduring Tensions
Environmental Design (DEEP-DIVE)
From War to Peace
Development Safari
Food & the Garden (DEEP-DIVE)
Gurus and Governors
Hidden History
Paging Dr. Darwin
Radicals and Reformers
Speak to the World
Students Without Borders
The Asian Lens

Chemistry FIG Options

Coffee: Chemistry and Culture
Human Genome (DEEP-DIVE)
Science in the News
The Problem with Problems
The Secrets to Success in STEM