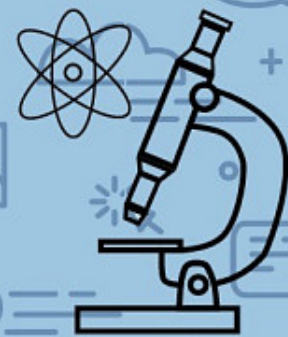


SCIENCE IN MEDIA



Academic Team:

First-Year Experience Seminar Instructor

Diane Hawley
dhawley@uoregon.edu

FIG Assistant

Lauren King Watt
lkingwat@uoregon.edu

Next Steps:

1. Learn more about your FIG by visiting its page (linked below)
2. Complete your Fall Term Checklist
3. Follow uofigs and uo_fye on instagram



@uofigs
@uo_fye

About the FIG:

Are you ever frustrated by the level of science literacy among the public, especially as it impacts policy decisions or general wellbeing? As a student and consumer of science, do you wish for more substantive explanations of science topics in the popular press or, conversely, do you often find such explanations too complex or irrelevant? Do you ever struggle to explain science concepts to family and friends in a way that is both interesting and engaging but also not too complicated? This FIG will consider how science stories and information are presented by mainstream, popular, and social media, emphasizing how scientific knowledge and issues can be most effectively communicated to nonscientists. Students will have the opportunity not only to consider and discuss these topics but also to complete a creative project to present a STEM topic of their choice to an audience of their choice using, for example, a children's book, coloring book, pamphlet, or video.

For more information, visit:

<https://fyp.uoregon.edu/science-media>

SCIENCE IN MEDIA



Science in Media							
	Monday	Tuesday	Wednesday	Thursday	Friday	Saturday	Sunday
8AM	CH 111 10980 COL 150 8:00am-8:50am	CH 111 15454 MCK 240C 8:00am-9:50am	CH 111 10980 COL 150 8:00am-8:50am		CH 111 10980 COL 150 8:00am-8:50am		
9AM	UGST 109 16229 KLA 107 9:00am-9:50am						
10AM							
11AM					MATH 111Z 15788 FEN 117 11:00am-11:50am		
12PM	MATH 111Z 15787 COL 150 12:00pm-1:20pm		MATH 111Z 15787 COL 150 12:00pm-1:20pm				
1PM							
2PM							
3PM							
4PM				MATH 111Z 15788 STB 151 4:00pm-4:50pm			
5PM							
6PM							

For more information, visit:
<https://fyp.uoregon.edu/science-media>